

---

# REPROGRAMMING

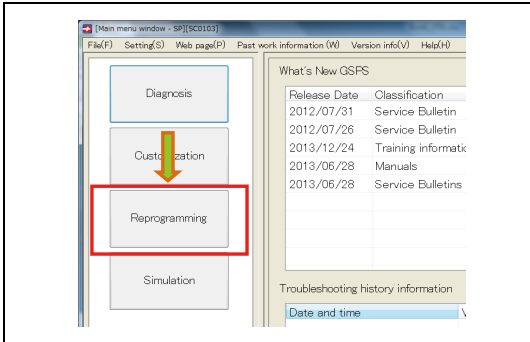
<b>REPROGRAMMING .....</b>	<b>2</b>
DETERMINING THE SYSTEM.....	2
AUTOMATIC REPROGRAMMING.....	3
SPECIFYING THE REPROGRAMMING FILE .....	4
WRITING - COMMON .....	5
WHEN AN ERROR OCCURS DURING WRITING....	6

# REPROGRAMMING

## DETERMINING THE SYSTEM

EN01N80ZZZ080102001001

1. PRESS THE [Reprogramming] BUTTON.  
(Main screen)

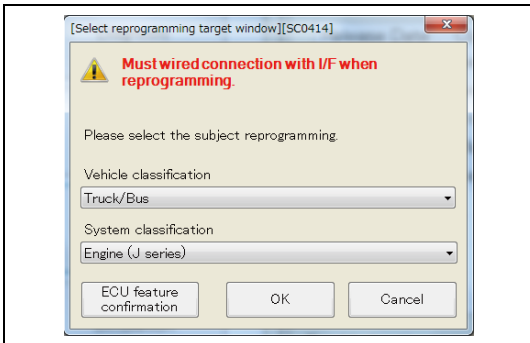


SHTS80ZZZ0800001

2. SELECT [Vehicle classification] AND [System classification] AND PRESS THE [OK] BUTTON.  
(Select reprogramming target window)

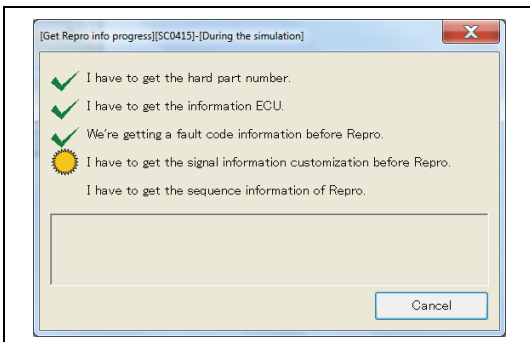
### HINT

For reprogramming, connect the I/F with a wired connection.



SHTS80ZZZ0800002

3. READING STARTS.  
(Get Repro info progress)

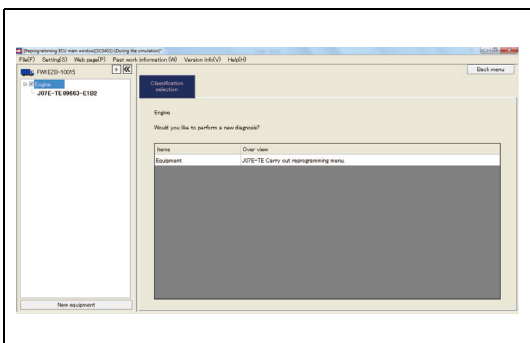


SHTS80ZZZ0800003

4. WHEN READING IS SUCCESSFULLY COMPLETED, THE REPROGRAMMING ECU MAIN WINDOW IS AUTOMATICALLY DISPLAYED.  
(Reprogramming WCU main window)

### HINT

If an error occurs, the details of the error are displayed in the user notification area.



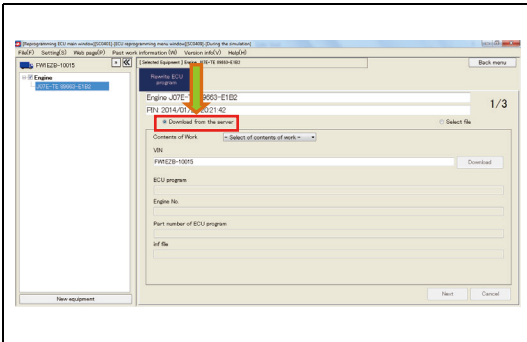
SHTS80ZZZ0800004

## AUTOMATIC REPROGRAMMING

EN01N80ZZZ080102001002

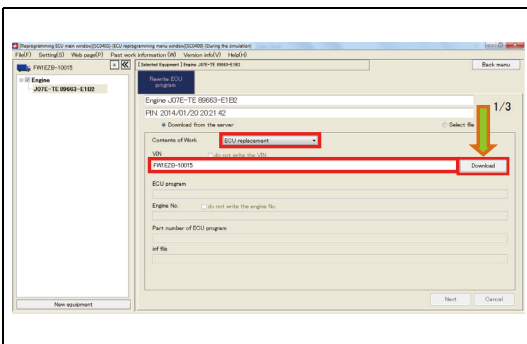
This function is used to automatically download the files necessary for reprogramming from the network and execute reprogramming.

1. ON THE DISPLAYED TREE, SELECT A SYSTEM AND SELECT THE RADIO BUTTON NEXT TO "Download from the server." (Reprogramming ECU main window)



SHTS80ZZZ0800005

2. SPECIFY THE VIN AND WORK ITEMS AND PRESS THE [Download] BUTTON. (Reprogramming ECU main window)

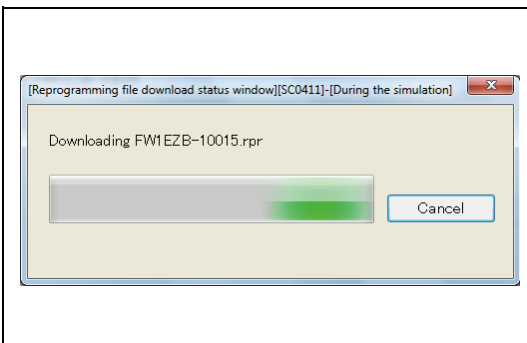


SHTS80ZZZ0800006

3. DOWNLOADING IS STARTED. (Reprogramming file download status window)

### HINT

If an error occurs, a message appears.



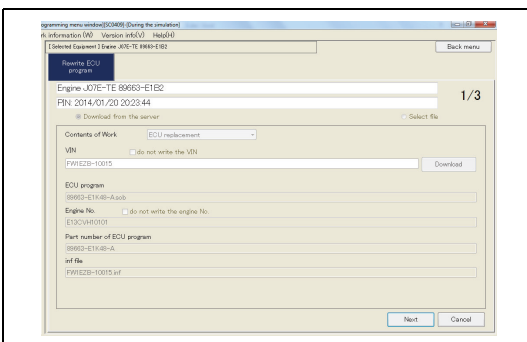
SHTS80ZZZ0800007

4. WHEN THE DOWNLOAD IS COMPLETED, THE DATA OF THE FILE ARE DISPLAYED. (Reprogramming ECU main window)

(1) Confirm the content and press the [Next] button.

### HINT

- If there is a problem with the content of the reprogramming file, a message appears.
- Then, follow the procedure given in the "REPROGRAMMING VERIFICATION - COMMON."



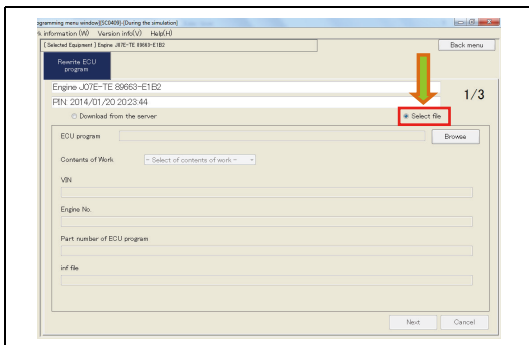
SHTS80ZZZ0800008

## SPECIFYING THE REPROGRAMMING FILE

EN01N80ZZ080102001003

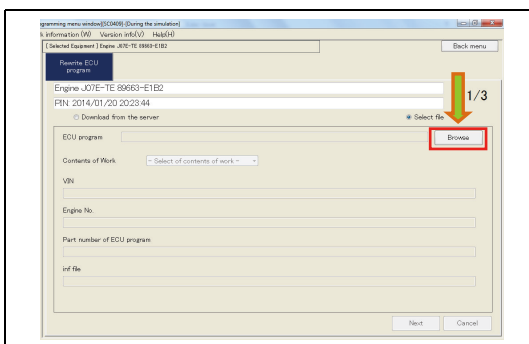
Specify the files needed for reprogramming and execute reprogramming.

1. ON THE DISPLAYED TREE, SELECT A SYSTEM AND SELECT THE RADIO BUTTON NEXT TO "Select File." (Reprogramming ECU main window)



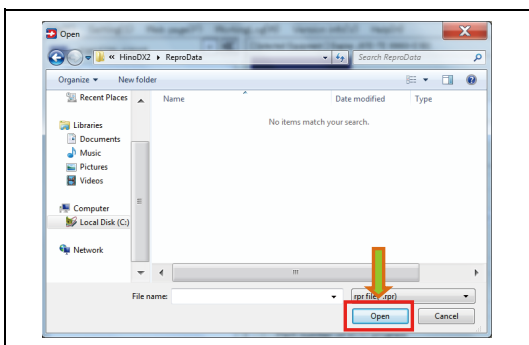
SHTS80ZZ080009

2. PRESS THE [Browse] BUTTON. (Reprogramming ECU main window)



SHTS80ZZ080010

3. SELECT THE TARGET REPROGRAMMING FILE AND PRESS THE [Open] BUTTON. (Reprogramming ECU main window)

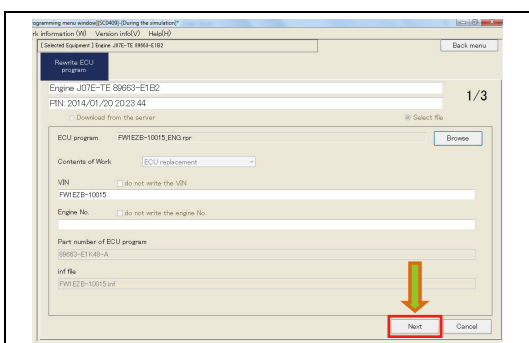


SHTS80ZZ0800011

4. THE DATA OF THE SELECTED FILE ARE DISPLAYED. (Reprogramming ECU main window)
  - (1) Confirm the content and press the [Next] button.

### HINT

- If there is a problem with the content of the reprogramming file, a message appears.
- Then, follow the procedure given in the "REPROGRAMMING VERIFICATION - COMMON."



SHTS80ZZ0800012

### REPROGRAMMING VERIFICATION - COMMON

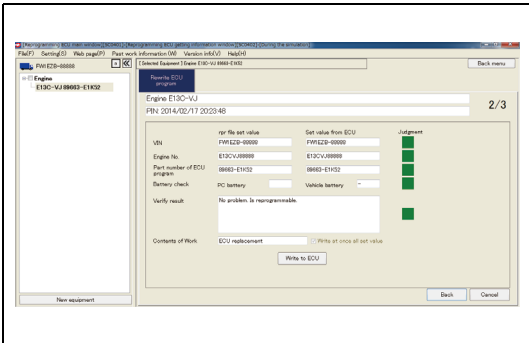
Download data from the ECU and verify by checking against the file data.

**1. VERIFICATION STARTS AND THE RESULT IS DISPLAYED.  
(Reprogramming ECU data download screen)**

- (1) Confirm the content and if no problem is found, press the [Write ECU] button.

**HINT**

Then, follow the procedure given in the "WRITING - COMMON."



SHTS80ZZZ0800013

### WRITING - COMMON

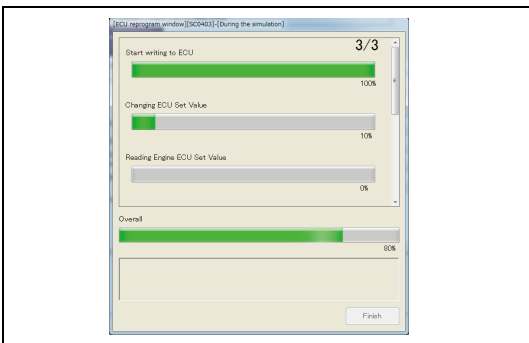
EN01N80ZZZ080102001004

Write the file data into the ECU and create an inf file, and then upload the data to the server.

**1. WRITING STARTS.  
(ECU Reprogram window)**

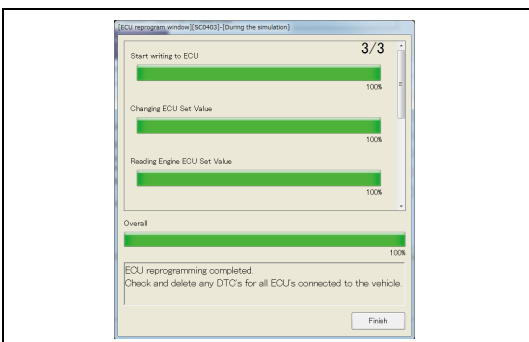
**HINT**

Writing takes a few to a few tens of minutes.



SHTS80ZZZ0800014

**2. WHEN WRITING IS COMPLETED, PRESS THE [Finish] BUTTON.  
(ECU Reprogram window)**



SHTS80ZZZ0800015

## WHEN AN ERROR OCCURS DURING WRITING

EN01N80ZZZ080102001005

### 1. IF ANY ERROR OCCURS DURING WRITING, YOU CAN CANCEL, REDO, OR RETRY.

- Cancel: Writing ends in failure. The ECU function may be lost.
- Redo: The writing process is executed again from the beginning.
- Retry: The process in which the error occurred is executed again.

### HINT

**An error is displayed also when registration of an Inf file fails. In this case, however, writing of ECU is successfully completed, and therefore registration of the Inf file can be executed later by special working.**